

Contents

Section 1 - About Pedigree Plus II

Pedigree Plus II Support Information	5
What to do before contacting Technical Support	5
How to register Pedigree Plus II	5

Section 2 - Getting Started

Hardware Requirements	6
Installing Pedigree Plus II	6
Uninstalling Pedigree Plus II	6
Starting Pedigree Plus II	6
Importing Database from Pedigree Plus Version 1.0	7
Importing Your Own Database	8
Making a Backup	10
Compacting Your Database	10

Section 3 - Pedigree Plus II Main Menu

Horse Information Button	11
Browsing through all horses in the database	11
Finding a specific horse in the database	12
Adding a horse to the database	12
Deleting a horse from the database	13
Group, Category and Breed Buttons	14
Group Button	14
Category Button	15
Breed Button	15
Classification Maintenance	15
To add a classification	15
To delete a classification	16
To change a classification	16
Searching for horses marked with Group, Category and Breed classifications	16
Print Group Button	16
Printing reports according to Groups, Categories or Breeds	17
Printing a report including all horses in the database	17

Section 4 - The Horse Information Screen

Adding information for a new horse	18
Using the Custom Information Fields	19
Changing information for an existing horse	20
Building a six generation pedigree	20
Listing a horse's progeny	21
Making a hypothetical mating	21
Printing the Horse Information Screen	21
Exiting the Horse Information Screen	21

Section 5 - The Pedigree Screen

What this screen will do	22
Spotting a horse's inbreeding	22

Selecting a horse22
Viewing the six generation pedigree22
Printing a pedigree23
Updating names in the pedigree24
Exiting the pedigree screen24

Section 6 - Progeny Information Screen

What does the progeny screen do?25
Finding a horse's progeny25
Sorting progeny25
Listing progeny by sex26
Building a report from the progeny information26
Printing the Progeny Report26
Viewing the pedigree of any progeny26
Exiting the Progeny Screen26

Section 7 - Hypothetical Mating Screen

What is a Hypothetical Pedigree27
Creating a Hypothetical Pedigree27
Viewing the Information screen of any horse in the pedigree27
Creating a new Hypothetical Pedigree28
Printing a Hypothetical Pedigree28
Saving a Hypothetical Pedigree28

Section 8 - Troubleshooting

Searches take too long29
Computer locks up29
Data Access Errors29
Items missing on screen29
Names not found in database30
Why am I getting duplicate horses?30
If you need to reinstall Pedigree Plus II30
Tip: Adding horses to the database31
Pedigree Plus II Support Information31

SECTION 1

About Pedigree Plus II

Pedigree Plus II Support Information

Pedigree Plus II is easy to install and runs trouble-free under most conditions. In the unlikely event you experience problems installing or running Pedigree Plus II Software, The Russell Meerdink Company, Ltd. provides free technical support for 90 days to all registered users by e-mail at support@horseinfo.com. You may also receive technical support by telephoning (920) 725-0955. After 90 days, there is a charge of \$9.95 per call which will be charged to your Mastercard, Visa, American Express or Discover card. Technical support hours are Monday through Friday between the hours of 9:00 a.m. and 4:30 p.m. Central time.

What to Do Before Contacting Technical Support

The majority of all routine problems can be solved by performing a cold reboot.

- A. How to cold reboot the program.
 - 1. Exit all programs.
 - 2. **Turn off computer.**
 - 3. Restart computer.
 - 4. Restart program (double click on icon).
- B. Read the troubleshooting guide (section 8 of this manual).

How to Register Pedigree Plus II

Please fill out and mail in the registration postcard that was included with your software. You will find the registration number on the label which is on the program disks. Registering the program will help us to give you the quickest support possible.

SECTION 2

Getting Started

Hardware Requirements

486 IBM compatible PC or faster

Windows 95 or greater

8 Megabytes RAM

10 Megabytes hard disk space

Note: Large databases will slow down the program when used with the minimal hardware. The ideal hardware for use with larger databases of more than 5000 horses is:

Pentium processor

16 Megabytes RAM or more

Installing Pedigree Plus II

1. Place the installation CD-ROM in your disk drive.
2. Click on Start and select Run.
3. Type your CD-ROM drive letter followed by `:\Pedigree Plus II Setup\Setup.exe` in the command line box, then choose OK.
4. The Pedigree Plus II installation screen will appear. Enter the drive and directory where you wish to install Pedigree Plus II (Pedigree Plus II will default to `c:\Program Files\Pedigree Plus II`).

Pedigree Plus II will now install itself on your computer. After installation is complete, a Pedigree Plus II group will appear in your Windows Program Manager.

Uninstalling Pedigree Plus II

Pedigree Plus II does not modify Windows System files in any way. To remove Pedigree Plus II from your computer, simply delete the Pedplus directory, program files, and/or icons from your computer's hard drive.

Starting Pedigree Plus II

1. In the Windows Program Manager, move the mouse pointer to the Pedigree Plus II group icon.
2. Double click the left mouse button.
3. The Pedigree Plus II group will open. Move the mouse pointer to the Pedigree Plus II icon.
4. Double click the left mouse button to load the Pedigree Plus II

program.

5. This will take you to the opening screen. Click on the **Continue** button to enter the program.

TIPS: Read this before doing data manipulation

Remember to double check data before importing. You might want to make a backup of the current database (if there is any data in it) first.

Database names cannot have spaces or special characters such as: !, @, #, %, ^, &, *, (,), +, :, ", <, >, ?, ., /, [,]. Underlines and numbers are okay. Do not include an extension such as .mdb as the the application will add this automatically to whatever name you assign.

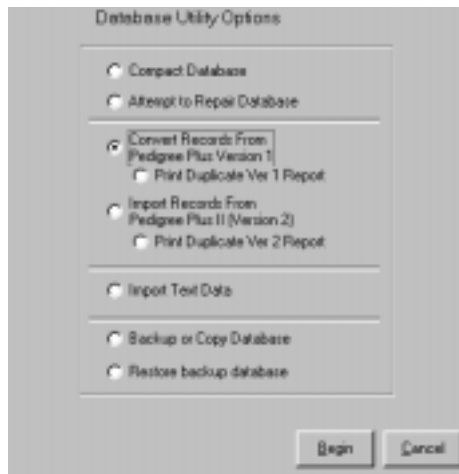
Pedigree Plus II should not be installed in the same directory where Pedigree Plus Version 1.0 is located.

Importing Your Pedigree Plus Version 1.0 Records

This step is necessary if you already have Pedigree Plus Version 1.0 and need to move the database that you created to your new Pedigree Plus II program.

From the Pedigree Plus II Main Menu

1. Select **Database Utilities**.
2. Select the “Convert Records From Pedigree Plus Version 1” option and click on begin.



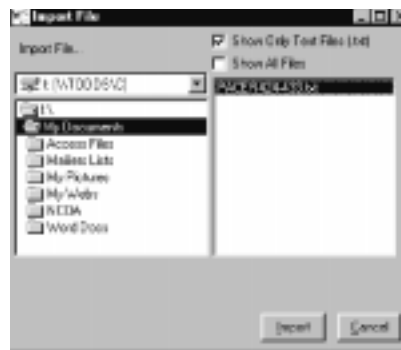
3. A message will alert you that the “Current database will be repaired and compacted before continuing”- select **OK**.

4. After the database has been compacted a dialog box will appear. Choose your original database which should be named PedPlus.mdb (remember that PedPlus2.mdb is the current database and not the one that you are looking for now) that was created while using your Pedigree Plus Version 1 program and select **Open**.
5. At this point your records will be imported into Pedigree Plus II but if duplicate horses are found you will get a message that asks you to either continue with the import or cancel the import. If you do not get this message then the import will finish automatically and you can begin using your Pedigree Plus II program. If you do get this message click on **No** and go on to number 6.
6. At this point you must print out a list of duplicates. From the Pedigree Plus II main menu choose **Database Utilities** and then choose "Print Duplicate Ver 1 Report". With this report you must manually make corrections in your original Pedigree Plus Version 1.0 database.
7. This can be done by finding the database through Windows Access (if you have it), or in the Pedigree Plus Version 1.0 program. See page 13 of this manual for information on deleting horse records in the Pedigree Plus program.

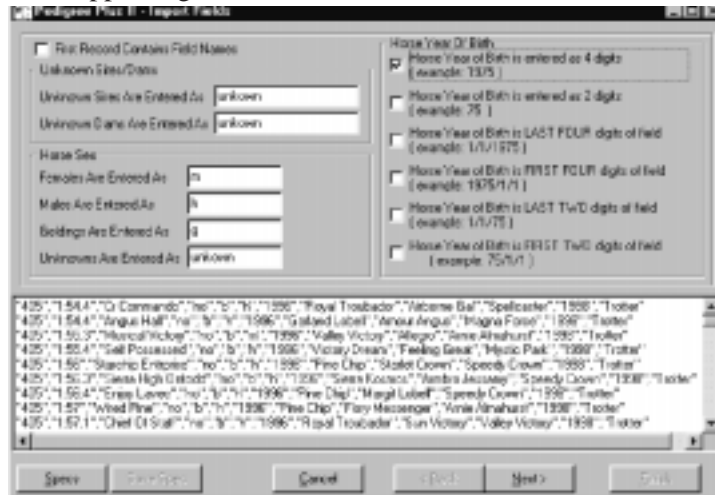
Importing a database from another windows application

This is necessary if you are using Pedigree Plus for the first time and already have a database of horses and their corresponding information in a different application (for example, Access) that you want to enter into Pedigree Plus II. Remember: only comma delimited text files may be imported. If your database is not already in this format you will have to save it as a text file. Also, the file must at the very least contain horse name, sire name, and dam name for each record.

1. Go to the **Database Utilities** button in Pedigree Plus II main menu and choose the Import Text option.
2. Select the text file that you would like to import (remember that no matter what it was originally, the database should have been saved as a text file) and click on **Import**.



- The Pedigree Plus II Import Fields Screen should appear with your text file appearing in the bottom half of the screen.



- If the first record in your file is not a horse record but a list of field names you must check the box marked “First Record Contains Field Names” at the top of this screen.
- Unknown Sire/Dam: Fill out the required information for each field. For example, in your database if you used the word ‘missing’ for horses that were unknown, type in the word ‘missing’ in the field indicated Unknown Sires Are Entered As.
- Horse Sex: For example, if you use the single letter ‘m’ (short for mare) to indicate a female horse in your database, type in the letter ‘m’ in the field for Females Are Entered As. If no sex information is in the records use an “x”.
- Year of Birth: If the year of birth is not in the records, the year of birth will be set to “0000”. Because of the year 2000 it is important to use a four digit number to indicate the year. If you do not, you will have problems in the future entering birth years. If your database has only years represented by a 2-digit number you may want to go back and correct this.
- Click on the **Next** button to move to the next step. In this screen you will need to match the fields with names. At this point you can also decide what, if any, information in your database you want to use for custom information fields. When all the fields have been defined, click the **Finish** button.
- When finished you can click the close window button on the “Import Complete” window. Your data is now available to work with in Pedigree Plus II.

Saving Specs

This option is available if you want to save these import specifications for future use (if you are going to be importing the same type of file again with different horses). To save these specs, click on the **Save Specs** button on the lower left hand corner of screen. To select a spec again click on the **Specs** button one screen back to choose which format you would like to use again.

Making a Backup

With this backup/copy feature you will be able to revert to a saved copy of the database in case of a bad import, or to keep separate databases of different horses or to make a quick copy of the database to transfer to another Pedigree Plus II user, etc.

1. Click on **Database Utilities** in the Pedigree Plus Main Menu.
2. Select Backup or Copy database.
3. Enter the name that you would like to save the backup/copy as. If a database already exists in the directory with this name you are given the option of overwriting (if this is the file that you want to use for backup data) or cancelling and renaming the backup.
4. Click **OK**.

Reverting to Your Saved Backup/Copy

1. Click on **Database Utilities** on the main menu.
2. Select the Restore Backup database option.
3. Now you must decide what you will do with the current database. You can either delete the database or rename it to be saved as something else if you think that you will need it for future reference.
4. When you click on **Begin** the backup database is overwriting PedPlus2.mdb. Note: your backup is still in your directory as a separate database with whatever name you originally assigned to it. This means that if the import of the backup does not complete successfully you will still have that backup database so that you can try again to import it.

Compacting/Repairing the PedPlus2.mdb Database

Compacting a database removes deleted records. This option can also be found by clicking on the **Database Utilities** button that can be found on the main menu. This will make the database size smaller and much more efficient if large amounts of horses are being added and deleted, or many pedigrees being printed. See the troubleshooting portion of this manual for more information on compacting/repairing the PedPlus2.mdb database.

SECTION 3

Pedigree Plus II Main Menu



HORSE INFORMATION BUTTON

Pedigree Plus II allows you to either browse through all horses in your database or search for a specific horse.

A. Browsing through all horses in the database

Pedigree Plus II gives you the option to scroll through all of the horses in the database individually.

From the Pedigree Plus II Main Menu

1. The **Group**, **Category** and **Breed** boxes should be marked **All**.
2. The **Horse** box must be blank.
3. Click on the **Horse Information** button.
4. This will take you to the Horse Information page for the first horse in the database in alphabetical order.
5. To scroll through the horses, click the **right arrow** button. To move backwards, click on the **left arrow** button.
6. To return to the main menu, click the close window button on the top right hand corner of the screen.

B. Finding a specific horse in the database

Pedigree Plus II allows you to look up the Horse Information screen for an individual horse in the database.

From the Pedigree Plus II Main Menu

1. Type the horse's name in the **Horse** box.
2. The **Group, Category and Breed** boxes should be marked **All**.
3. Click on the **Horse Information** button.
4. If the horse is in the database, it will take you to the Horse Information page for that horse. If the horse is not in the database, the program will prompt you and ask if you want to add it.
5. To return to the main menu, click the close window button in the upper right hand corner of the screen.

When you know the Sire, Dam or Dam's Sire of the horse

1. Go to the Main Menu and choose **Search Options**.
2. If you want to search using the Dam, Sire or both fill in the top search by first entering the name in the field and then clicking on **Get Sires**. Click on the down arrow next to the field and choose the sire that you want. Do the same with the Dam field.
3. If you want to search using the Dam and Dam's Sire use the bottom search remembering to hit **Get Dam** or **Get Dam's Sire** to create a drop down list to choose from, after you have entered the name.
4. Once you have chosen your search criteria click on the **Search** button to start the search.

C. Adding a horse to the database

Pedigree Plus II allows you to add individual horses to the database.

From the Pedigree Plus II Main Menu

1. To add a horse, type the horse's name in the Horse box.
2. Click on the **Horse Information** button. (This is to ensure that the horse is not already in the database.)
3. The program will prompt you, if the horse is not in the database. You must then click the **Add Horse** button.
4. This will take you to the blank Horse Information page where you can enter the horse's information.
5. In the Sire box, type in the sire's name. Click on **Sire** and choose

- from the drop down box.
6. In the Dam box, type in the dam's name. Click on **Dam** and choose from that drop down box.
 7. If these horses (sire and/or dam) are not in the database, the program will ask if you want to add them. When you save the horse record, these new horses will be added to the database.
 8. **If you have typed horses in the database and then you cannot find them in the program**
 - a. You may have typed a name incorrectly. Check spelling, punctuation and spacing (i.e. B.F. Coletown, BF Coaltown or B.F. Coaltown as B. F. Coaltown).
 - b. You may also look up horses by typing in part of the name and clicking on the **Horse Information** button. This will make up a group of all horses with that name (i.e. Speedy Crown, type Speedy and a group will be made of all horses whose names begin with Speedy).

D. Deleting a horse from the database

If you find that there are duplicate horses in the database or there is a horse that you want to remove, Pedigree Plus II allows you to delete individual horses.

From the Pedigree Plus II Main Menu

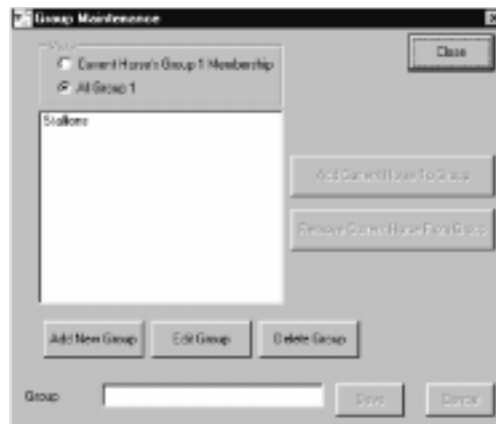
1. Enter the name of the horse that you would like to delete in the **Horse** box.
2. Click on **Horse Information**.
3. This will take you to the Horse Information screen.
4. Click on **Delete** from the bar at the top of the screen.
6. The program will ask you to confirm the deletion. Click on the **Yes** button.
7. This will remove all information regarding that horse and return you to the main menu.
(Caution! If you remove duplicate horses you may delete horses that are already linked in pedigrees. If you do so, pedigrees may change.)

GROUP, CATEGORY AND BREED BUTTONS

These buttons are used to tag individual horses so they can be included in separate classifications. You can use these classifications to run specific searches. These buttons are found on the bottom left hand corner of the horse information screen. This information can be entered when you are adding a new horse (you must hit the save button first) or when you decide to assign a horse that you already have in your database into a group, category or breed. Each horse can be assigned to as many groups, categories or breeds as you would like.

A. Group

This classification is used to build a group of horses by tagging individual horses with a unique identifying word. For example you can create a group called 'stakes winner.'



1. You can assign new or pre-existing horses to this group 'stakes winner' in the Horse Information Screen by clicking the **Group** button, choosing an appropriate group and clicking **Add Current Horse to Group**.
2. At this point if you want to create a new group you may do so in this Group Maintenance Window as well. This will create a new index sort alpha-numerically (ascending). Then you can search that portion of the database containing only the horses in that group.

B. Category

This classification can be used to build a secondary group of horses that can expand on your Group index. For example, if you have established a “stakes winner” group you can breakdown the classification further by using the Category index to tag individual horses by amount of winnings.

1. In the horse information screen you can click on the category button and use the same process to choose a category (and/or create a new one) that you used to add a horse to a particular group.
2. With this information assigned you can search for all stakes winners that have life earnings of over \$100,000.

C. Breed

This classification is used to build a group of horses by tagging them with their breed.

1. If you are building pedigrees of only one breed of horse you can default the breed classification by clicking on the Maintenance button next to the Breed field on the Main Menu.
2. Choose your breed and click on **Default** and then **Save**. See more about maintenance below.
3. If you have multiple breeds, use the same process as you would for group or category.

CLASSIFICATION MAINTENANCE

These buttons are used to add, delete or change individual Group, Category or Breed classifications from the Main Menu.

A. To add a classification

From the Pedigree Plus II Main Menu

1. Click on the maintenance button for the particular classification. This will take you to the maintenance screen.
2. Click on the **Add** button and type your new classifying word in the required field.
3. Click on the **Save** button. Your word is now added to the choices.
5. Click on the **Close** button. This will take you back to the Main Menu.

B. To delete a classification

1. Click on the maintenance button for the particular classification. This will take you to the maintenance bar.
2. Click on the classification in the list that you want to delete.
3. Click on the **Delete Category** button.
4. Click on the **Yes** button. The word has now been deleted.
5. Click on the **Close** button. This will take you back to the Main Menu.

C. To change a classification

1. Click on the maintenance button for the particular classification. This will take you to the classification maintenance screen.
2. Click on the classification from the list that you want to change and click on **Edit**.
3. Make the necessary changes.
4. Click on the **Save** button. Your word is now changed.
5. Click on the **Close** button. This will take you back to the Main Menu.

E. Searching for horses marked with Group, Category and Breed classifications.

Pedigree Plus II allows you to build a report made up of horses that are marked with Group, Category and Breed classifications.

1. Select the specific Group, Category and Breed classification from the drop down boxes. For example, you can find all of the Standardbred (Breed) Sires (Group) that stand in New York (Category).
2. Click on the **Horse Information** button.
3. This will take you to the Horse Information Screen for the first horse included in the Groups, Categories and/or Breeds.
4. Page through the horses in that group by using the **right** and **left arrows**.
5. To print the report, see the section below on the printing reports.

PRINT GROUP BUTTON

Use this button to develop a report which includes those horses that are marked with a group, category or breed. This button also allows you to build a report including all of the horses in the database. These reports

can be displayed on the screen or printed.

A. Printing reports according to Groups, Categories or Breeds

From the Pedigree Plus II Main Menu

1. After you have selected the Group, Category and Breed Selections that you want to include, click on **Horse Information**. This will take you to the Horse Information Screen of the first horse in your search. You can scroll through the compilation of horses by using the **right** and **left** arrow buttons on the right hand side of the screen.
2. To print all the horses compiled in the search click on the **Print Group** button at the top right hand corner of the screen.
3. Click on the **Printer** icon button to begin printing.

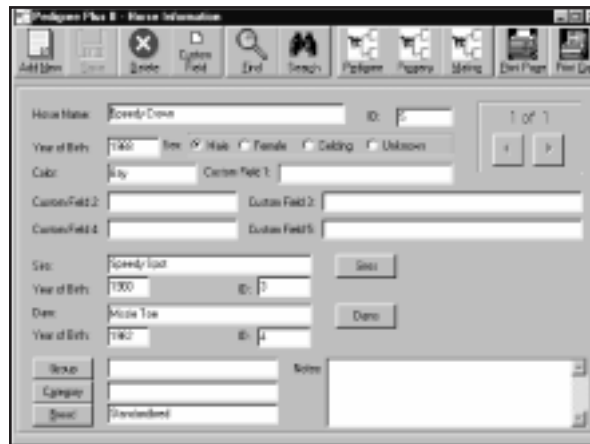
B. Printing a report including all horses in the database

From the Pedigree Plus II Main Menu

1. Type **All** in the boxes for Group, Category and Breed.
2. Click on **Horse Information**. This will take you to the Horse Information Screen of the first horse in the database.
3. To print the report, click on the **Print Group** icon at the top right hand corner of the screen.

SECTION 4

The Horse Information Screen

The image shows a screenshot of a software window titled "Horse Information". The window has a menu bar with icons for "Add Horse", "Delete", "Custom Field", "Find", "Image", "Partner", "History", "Setting", "Print Page", and "Print List". The main area contains several input fields and buttons. At the top, there is a "Horse Name" field with "Screedy Down" entered and an "ID:" field. Below that is a "Year of Birth" field with "1997" and radio buttons for "Sex" (Male, Female, Gelding, Unknown). The "Color" field has "Bay" entered. There are five "Custom Field" boxes (1-5) for additional data. The "Sex" field has "Screedy load" entered and a "Sex:" button. Below that is a "Year of Birth" field with "1900" and an "ID:" field. The "Dam" field has "Moose Top" entered and a "Dam:" button. At the bottom left, there are buttons for "Group", "Category", and "Breed". A "Save" button is at the bottom right. The window also shows "1 of 1" records and navigation arrows.

A. Entering information for a new horse

You can enter information to a horse in the Horse Information Screen.

1. First click on **Add Horse**. Enter the horse's name and then type in the year of birth for the horse, i.e., 1997.
2. Mark the sex of the horse with male, female, gelding or unknown.
3. Enter the name of the sire, then click the **Sire** button. If the sire is in the database, the information (record number and year of birth) will be in a drop down box for you to choose from. If the sire is not in the database, it will prompt you to enter the sire's year of birth and then hit **OK**. This horse will be added to the database when you save your horse's record.
4. Enter the name of the dam, then click the **Dam** button. If the dam is in the database, the information (record number and year of birth) will be in a drop down box for you to choose from. If the dam is not in the database, it will prompt you to enter its year of birth and then hit **OK**. The dam will be added to the database when you save your horse's record.

Note: If the year of birth for the sire or dam does not fill in, do not add that information from this page. Correct the information from the sire or dam's own Horse Information page.

5. If you want to tag the horse with any Group, Category or Breed classifications click on the appropriate button (lower left hand corner of the screen). Highlight which group you want to assign

your horse to and hit the **Add Current Horse to Group** button. If you want to add your horse to a group that does not exist you may also create a new group before you assign your horse to it in this screen.

6. If you have notes that you would like to keep on the individual horse, type them in the **Note** box.
7. After you have entered the information, click on the **Save** button.
8. To exit to the Pedigree Plus II Main Menu, click on the **Close** button.

B. Using the Custom Field Options

This is one of the brand new aspects of Pedigree Plus II. You can use up to five custom fields to incorporate specialized information for your area of pedigree study. For example, if you are interested in the pedigrees of Paint Horses, your custom fields could be Color (note: color is already a field in the Horse Information Screen, but, **if** it is information that you want shown on the printed Pedigree it must be in a custom information field, group, category, or breed), Overo vs. Tobiano, Stud Fee, Points Won and Best Discipline.

1. In the Horse Information Screen click the **Custom Field** button.
2. In this screen you must enter the names of your custom info fields and then click **Apply**. **DO NOT** click on the **Clear Field** buttons unless you want to clear the information in the custom fields in every single horse record. All fields will accept letters and/or numbers. Notice that when you return to the horse information screen the custom fields now have the names that you applied.

Customize Fields

Create customized field names below by entering the desired name into the appropriate box. The name will be displayed as entered.

Field 1, 2, and 4 are limited to 50 characters.
Field 3 and 5 are limited to 100 characters.
Do not use characters such as: ", ' ! ! ! , } , ...

Custom Field 1 Name:	Stud Time	Clear Field 1
Custom Field 2 Name:	Anten Wins	Clear Field 2
Custom Field 3 Name:	Custom Field 3	Clear Field 3
Custom Field 4 Name:	Custom Field 4	Clear Field 4
Custom Field 5 Name:	Custom Field 5	Clear Field 5

Apply Close

3. Custom fields work best when they are consistent throughout your database. That means for every horse, the Custom fields should be the same and once you name them you should not rename them. Whenever you change the custom field name it changes throughout the database, but, the information that was entered into that field in each individual record does not change.
4. You can also automatically fill these custom information fields when importing a database that has information, besides what is required, that you want to include in the import. See page 9 for more information on this process.

Custom Field Hints:

Custom Fields 1, 2, and 4 are limited to 50 characters.

Custom Fields 3 and 5 are limited to 100 characters and are larger on the form to accommodate the extra characters.

The fields can be named anything as long as no special characters are used (!, @, #, \$, %, ^, &, *, (,), +, =, {, }, [,], <, >, ., ?, /).

If the field names are very long they will not be displayed properly when printing the pedigree.

Fields can be cleared by clicking on the Clear Field button next to each custom field in the Custom Fields window. This action will clear the field in all the records, not just the current record.

C. Changing Information on an existing horse

If you want to make changes to an existing horse, make the appropriate changes in the Horse Information Screen, then click on the Save button. The new changes will then be in the database.

D. Building a six generation pedigree

From the Horse Information Screen

From the Horse Information Screen for a horse, click on the **Pedigree** button. This will take you to the Pedigree screen for the horse. You can also look directly at the horse's pedigree by typing its name in on the Main Menu and then clicking on the **Pedigree Information** button.

E. Listing a horse's progeny

From the Horse Information Screen

From the Horse Information Screen for a horse, click on the **Progeny** button. This will take you to a list of progeny for the horse. You can scroll forward through the list by clicking the **right arrow** button. To move backwards, click on the **left arrow** button. Click on the **Print Progeny** button on the upper left hand corner of the screen to print a list of the horse's progeny. You can also reach the progeny information from the main menu by clicking on the **Progeny Information** button.

F. Making a hypothetical mating

From the Horse Information Screen

1. Once you have the Horse Information Screen for a horse, click on the **Mating** button. If you have entered a female, the program will prompt you to enter a sire's name. If you have entered a male, the program will prompt you to enter a dam's name.
2. Once you have entered the name, click on **Continue**.
3. This will take you to the hypothetical six generation pedigree.

G. Printing the Horse Information screen

From the Horse Information Screen

Once the screen comes up for the horse you have selected, click on the **Print Page** button. This will print the Horse Information Screen.

H. Exiting The Horse Information screen

1. Click on the close window button at the far right hand corner of the screen.

SECTION 5

The Pedigree Screen



What this screen will do

The Pedigree Information screen displays a six generation pedigree of any horse in the database. If there are horses in the pedigree that are not in the database, they will be shown as “unknown” in the pedigree. The sixth generation sires and dams will be shown in two separate columns. You should read this column across rather than up and down.

Spotting a horse’s inbreeding

The pedigree will show the inbreeding of the horse by displaying repeated names in red or parenthesis. Inbreeding is an ancestor appearing more than once in the pedigree of the horse.

A. Selecting a horse

From the Pedigree Plus II Main Menu

1. Type the horse's name in the Horse box.
2. Click on the **Pedigree Information** button.
3. This will take you to the six generation pedigree of the horse.

B. Viewing the six generation pedigree of a new horse

From the Pedigree Information screen

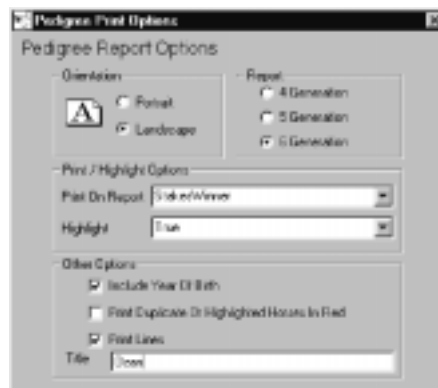
1. Click on the small pedigree icon button on the upper left hand corner of the pedigree page.
2. Enter the horses name and click **OK**.

Hint: If you right click (not left) on a horse in the pedigree, it will take you to the Horse Information screen for that horse. Then, click on the **Pedigree** button. This will also pull up the new pedigree.

C. Printing a pedigree

From the Pedigree Information screen

1. Click on the small printer icon button in the upper left hand corner of screen. This will give you your Print Report Options Screen.
2. Choose whether you want Portrait or Landscape layout (Portrait seems to work well). Choose the number of generations that you want to print.
3. At this point you can also choose what information besides the horse's name you want to appear on each line of the pedigree.



4. For example, if you want to show the assigned group of all the horses in the pedigree (remember: you will have had to assign each horse to a group classification in their respective Horse Information Screens in order for it to show up in the pedigree) in the "Print on Report" field choose "Group" in the drop down box. If you want to show each horse's assigned group as well as highlight all the horses in the pedigree that are Trotters, you must choose this specification in the Highlight field drop down box.

TIP: This is also where naming and using your custom fields (see page 19) pays off. You will notice that if you have assigned names to your custom fields these names will also show up in the "Print on Report" drop down box. If you choose one of your custom fields to show up on the Pedigree, you can also decide if any of that information should be highlighted by selecting it in the Highlight field drop down box.

5. Now you can choose whether or not to also print year of birth. If you have a color printer you can indicate that Duplicates and highlighted horses (in this case Trotters) be printed in red. If you do not have a color printer you may leave this option unchecked in which case duplicated and highlighted horses will appear with parenthesis around them.
6. You may also choose to title your pedigree.
7. Click **Print**.

Hint: When looking at a pedigree in the Pedigree Screen you may also highlight in red without having to go through print report options. Do this by clicking on the small green highlighter icon located at the upper left hand corner of the screen. You will be prompted to indicate what you would like to have highlighted.

D. Updating names in the pedigree

If there are horses in the pedigree that are not in the database, they will be shown as “unknown” You can update these horses directly from the pedigree form.

1. Click on the name of the horse whose sire and/or dam is shown as unknown. This will take you to the Horse Information screen for that horse. Do not click on a name shown as unknown.
2. Type in the sire and/or dam that is missing (see page 12 for details on entering sire and dam information).
3. If the horse or horses are in the database, its record number will automatically be shown. If the horses are not in the database, the program will prompt you and ask if you would like to add them.
4. To add the new horse, click on the **Yes** button. This will assign a record number to the horse you have just added.
5. To return to the original pedigree, click on the **Pedigree** button.
6. Click the **Refresh** button which is a small curved arrow icon button located on the top left hand corner of the Pedigree Screen. Your recently entered dam and sire should now appear in the appropriate place in the pedigree.

(Refreshing is also useful if you have added information other than sire/dam to a horse within the pedigree.)

E. Exiting the pedigree screen

Click on the close window button.

SECTION 6

Progeny Information Screen

What does the progeny screen do?

The progeny screen allows you to build an index made up of the progeny (offspring) from an individual horse.

A. Finding a horse's progeny (Progeny are the offspring of a horse.)

From the Pedigree Plus II Main Menu

1. To view a horse's progeny, type the horse's name in the **Horse** box.
2. Click on **Progeny Information** button.
3. This will take you to the Horse Information screens for the progeny of that horse.
4. To page through the horses, click on the **right arrow**.
5. To scroll back to a horse click on the **left arrow**.

B. Sorting progeny

You can resort by name of progeny, year of birth or sex.

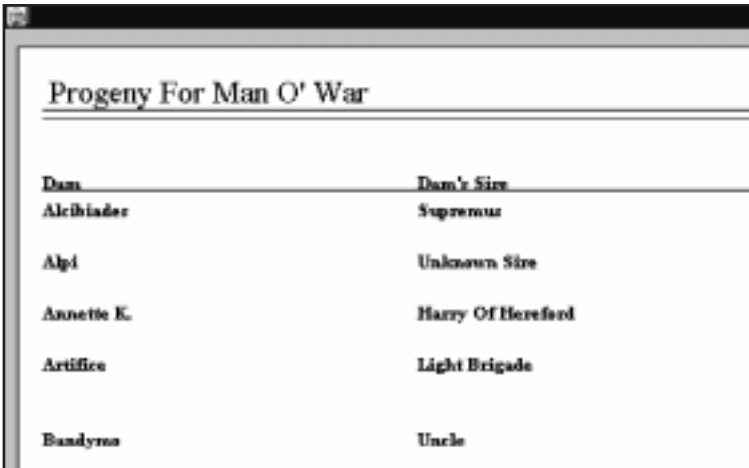
1. Type the sort order of the progeny by using 1, 2 and 3 respectively, i.e., if you want the order by name, sex, then year of birth, put a 1 in the **Name** box, 2 in the **Sex** box and 3 in the **Year of Birth** box.
2. Click on **Resort**.

C. Listing progeny by sex

1. If you want all progeny leave male/female option blank.
2. If you want only male or female progeny, click on that individual box and then click on **Resort**.

D. Building a report from the progeny information

To build a report including the progeny of the selected horse, click on the **Print Progeny** button. This will develop a printable report including



Dam	Dam's Sire
Alibiader	Supremus
Alpi	Unknown Sire
Annette K.	Harry Of Hereford
Artifice	Light Brigade
Bandyms	Uncle

all of the progeny.

E. Printing the Progeny Report

To print the progeny report, click on the **Print** icon at the bottom of the report. You can also export this list to another application by clicking on the **Suitcase** icon button and following the instructions.

F. Viewing the pedigree of any progeny

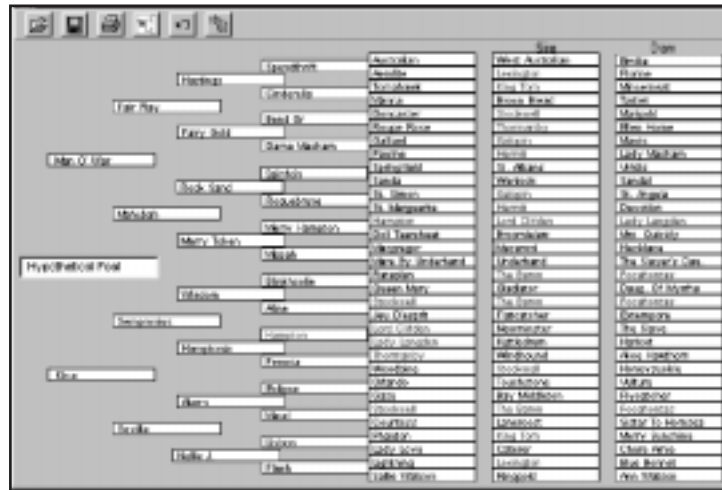
1. When you arrive at the Horse Information screen for the progeny horse, click on the **Pedigree** button.
2. The six generation pedigree for the progeny horse will be displayed.

G. Exiting the Progeny Screen

To exit the progeny screen, click on the close window button. This will return you to the Pedigree Plus II Main Menu.

SECTION 7

Hypothetical Mating Screen



What is a Hypothetical Pedigree?

A hypothetical pedigree is a pedigree developed by using a sire and dam of your choice and making a six generation pedigree from those two horses. Breeders can use this feature to evaluate the potential pedigree by breeding a mare “on paper” to many stallions.

A. Creating a Hypothetical Pedigree

From the Pedigree Plus II Main Menu

1. Click on the **Hypothetical Mating** button.
2. This will prompt you to enter the name of the prospective sire and dam. Type in the names and click on **Continue**.
3. The six generation pedigree of the hypothetical foal will be displayed.

B. Creating a new Hypothetical Pedigree

1. To create a new hypothetical pedigree click on the small pedigree icon found in the upper left hand corner of the Hypothetical Pedigree Screen.
2. Enter the new sire and dam names and hit **Continue**.

OR

1. Close out of the Hypothetical Pedigree Screen and go back to the Pedigree Plus II Main Menu.
2. Start a new hypothetical mating.

C. Printing a Hypothetical Pedigree

1. After you have finished viewing the six generation pedigree, click on the **Print Icon** button. See page 23 for detailed instruction on filling out the Pedigree Report Options.
2. Once the report is completed, click on the **Print** button at the bottom of the report window. This will print the pedigree.

D. Viewing the Information screen of any horse in the hypothetical foal pedigree

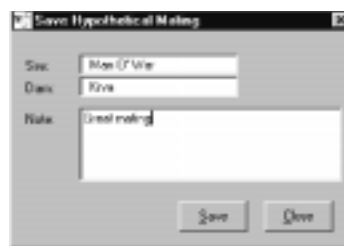
From the six generation pedigree

1. To view information about a specific horse in the pedigree, click on the horse's name.
2. The Horse Information page for the horse will be displayed.

E. Saving a Hypothetical Pedigree

Besides just building a hypothetical pedigree for viewing by using the **Hypothetical Mating** button, you can also save these pedigrees for future reference.

1. If you would like to save a hypothetical mating, click the small disk icon (**Save**) on the upper left hand corner of the Hypothetical Pedigree Screen.
2. In this window you can also add notes about the hypothetical match and hit **Save**.
3. You can view a list of your saved hypothetical matings either by clicking on Hypothetical Mating in the Main Menu and then making a check in the View Saved Hypothetical Matings option or by clicking on the open folder icon that is found in the upper left hand corner of the Hypothetical Pedigree Screen.
4. From here you can see the saved hypothetical pedigree of your choice by right clicking on it to display the pedigree.
5. You can also print your list of Hypothetical Matings and notes by clicking on the Print Icon in this window.



SECTION 8

Troubleshooting

SEARCHES TAKE TOO LONG

Large databases of 500 horses or more may exceed the capabilities of the memory in your computer. This may result in problems such as lengthy searches.

COMPUTER LOCKS UP

This may be a result from not having enough memory to run the program. First, exit the program and reboot. If this does not work, there may be a memory problem.

DATA ACCESS ERRORS

If somehow the database becomes corrupt, you may be able to fix it by compacting/repairing. Compacting a database removes deleted records. This will make the database size smaller and more efficient if large amounts of horses are being added or deleted or if many pedigrees are being printed.

1. Click on **Database Utilities** in the main menu.
2. Choose either Compact Database or Attempt to Repair Database.
3. Repairing a database causes all the indexes on the records to be refreshed. Before a database is refreshed, the application will automatically back it up to ApplicationPath\PPBackupup.mdb.
4. If errors occur during the repair, you can restore the database with this backup.

ITEMS MISSING ON SCREEN

For Windows 95 users: If you are missing items on your screen, make sure they are not hidden behind the task bar. If this is the problem, pull the task bar to the bottom of the screen.

NAMES NOT FOUND IN DATABASE

Incorrect spelling, punctuation or spacing

- a. You may have typed in a horse's name wrong. Check spelling, punctuation and spacing (i.e., B.F. Coletown, BF Coaltown or B.F. Coaltown as B. F. Coaltown).